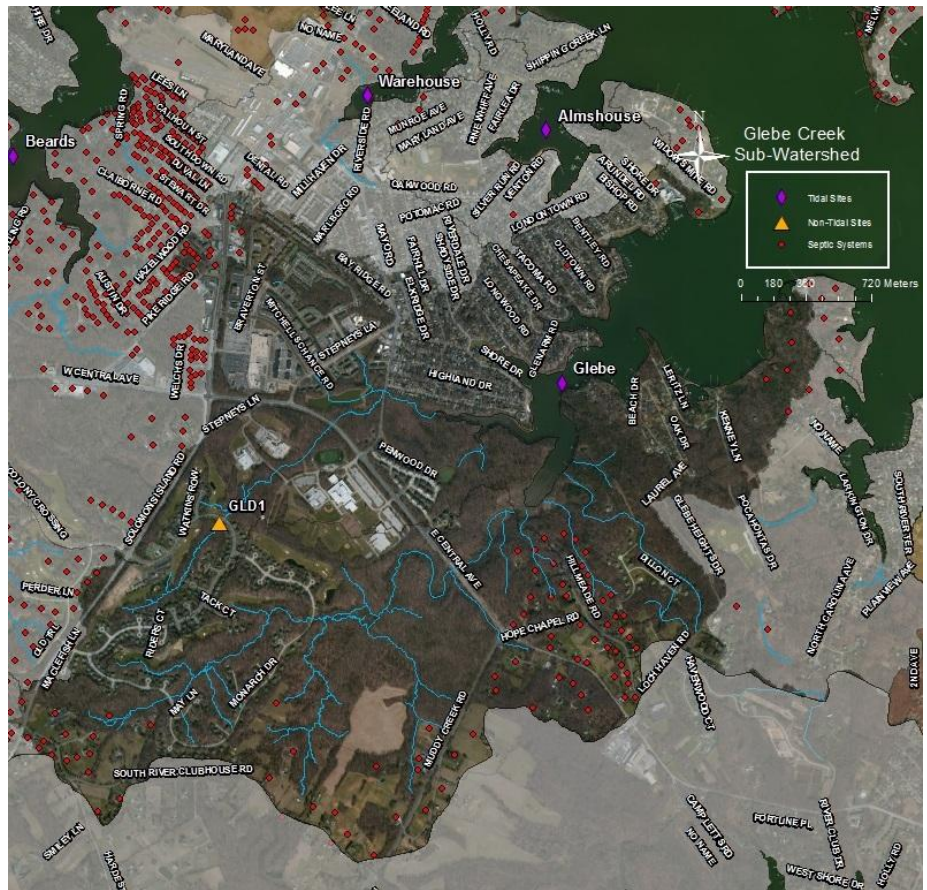


Glebe Bay 2016 Subwatershed Report Card

Did you know?

Summertime grasses were found on the southside of the Bay!



Glebe bay is home to the South River's oyster sanctuary! It is also the future site of an innovative living shoreline project that will incorporate oyster reefballs to reduce erosion near Turnbull Estates.

<i>Water Quality Indicators</i>	<i>Glebe</i>		<i>South River</i>	
	<i>2016 Score/Grade</i>		<i>2016 Score/Grade</i>	
Water Clarity	69%	B	62%	B
Dissolved Oxygen	86%	A	88%	A
Chlorophyll	47%	C	37%	D
pH	100%	A	99%	A
Temperature	52%	C	54%	C
OVERALL GRADE	71%	B	68%	B

*Letter grades correlate to very good, good, fair, poor, and very poor according to the creek's ability to sustain aquatic life.

Want to learn more?

An explanation of water quality indicators can found under "Water Words" at www.southernriverfederation.net