

Gingerville Creek 2016 Subwatershed Report Card

Did you know?

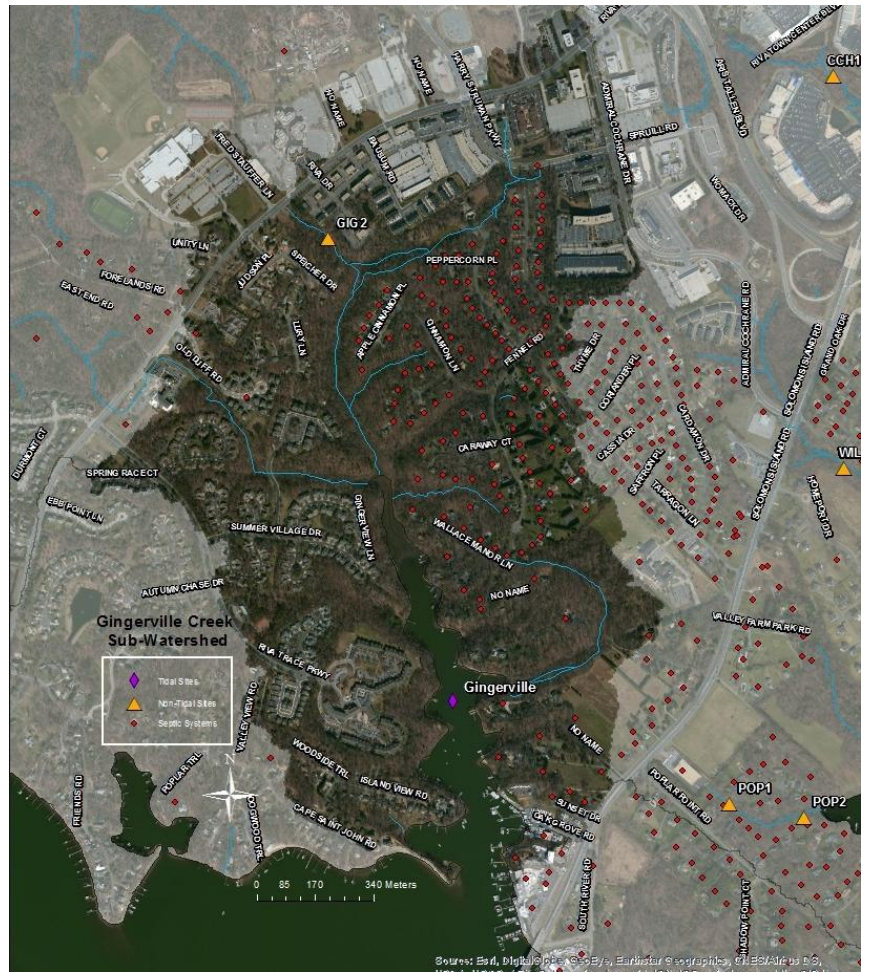
There are 620 acres in the
Gingerville Creek Watershed



Snapshot of the Federation's restoration efforts in Gingerville Creek:



In 2014, the Federation created a living shoreline for "The Marine" near the mouth of Gingerville Creek. While receiving the WhatsUp? Best Non-Profit award for 2015, we were able to revisit the project and see how much it had grown in the past 2 years!



Water Quality Indicators	Gingerville		South River	
	2016 Score/Grade		2016 Score/Grade	
Water Clarity	67%	B	62%	B
Dissolved Oxygen	86%	A	88%	A
Chlorophyll	29%	D	37%	D
pH	100%	A	99%	A
Temperature	54%	C	54%	C
OVERALL GRADE	67%	B	68%	B

*Letter grades correlate to very good, good, fair, poor, and very poor according to the creek's ability to sustain aquatic life.

Want to learn more?

An explanation of water quality indicators can found under "Water Words" at www.southernriverfederation.net